



SPECIFICATIONS

Housing

Die cast aluminum housing. Hinged door frame with two captive lock-up screws, one-piece silicone self-attaching door sealing gasket, seals door frame to housing. See Finish.

Reflector

Aluminum finished high gloss white (90% reflectance) polyester powder coat. See Finish

Lens

WPL: Impact resistant borosilicate prismatic glass, silicone caulked to door frame. WPDL: Impact resistant clear tempered glass, silicone caulked to door frame.

LED

CREE CXA2540 chip on board LED array. 3500 and 5000k, 80 CRI. 4000k is 70 CRI. RoHS-compliant, UL-recognized component. See table.

Dimmable LED Driver

Class 2, Outdoor Type 1. Input power 55 watts @ 120v, 54 watts @ 277v, output current 1050mA. No PCBs, IP66, Input/Output Isolation, FCC Title 47 CFR Part 15, Surge Protection (2 KV), Open/Short Circuit Protection. Class A sound rating. Dimming control 0

10v, dimming range 10 to 100%.

EZ5® Wall Mount System for Recessed Power Supply

One-piece cast aluminum bracket. Cast aluminum, wall mounting plate with 1/4" thick neoprene gasket. Quick disconnect wiring harness. Esco's **EZ5® Mounting System** allows the contractor to install the fixture in 5 minutes or less. Finished same as housing. See finish note.

EZ5® Wall Mount System for Surface Power Supply

External 16 GA. mounting flange provided with four 1/2" x 3/4" key-hole mounting slots for fixture installation. External junction box. Quick disconnect wiring harness. Esco's **EZ5® Mounting System** allows the contractor to install the fixture in 5 minutes or less. Finished same as housing.

Finish

Detergent cleaned with iron phosphate and chromic acid rust inhibitor. Chip resistant powder urethane polyester coating, electrostatic applied and baked. Standard color textured bronze. Custom colors are available. Consult factory or sales representative.

Photometric Information

Contact factory.

Fixture Warranty

The fixture mechanics are guaranteed to be free from defective material and workmanship, under normal installation and operating conditions, for ten years from date of shipment from the factory. The lighting system is warranted for five years, when properly installed and under normal conditions of use. Warranty does not cover lens. See General Terms and Conditions.

Energy Data

43.3°C (110°F) Max. Temperature, 120-277V/50/60Hz, Constant Current, -40°C Min. Temperature, 90°C Max. T case Temperature.

Certifications and Labels

Wall mount suitable for wet location, ETL, CETL listed and I.B.E.W. assembled and labeled.

SPECIFICATIONS SUBJECT TO CHANGE WITHOUT NOTICE



WPL Recessed Power Supply



WPL Surface Power Supply



WPDL Recessed Power Supply

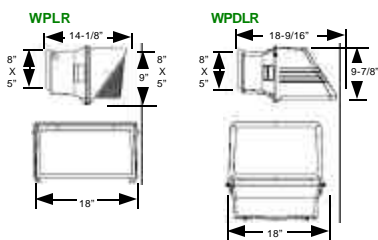


WPDL Surface Power Supply

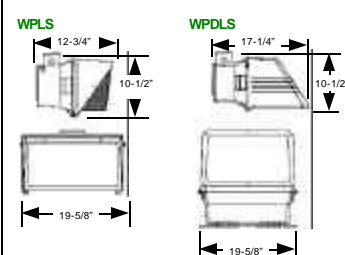
DIMENSIONS



Dimensions with EZ5® Mounting System for Recessed Power Supply



Dimensions with EZ5® Mounting System for Surface Power Supply



WBE City of Chicago Certified

3254 North Kilbourn Avenue Chicago, Illinois 60641-4505
 Phone: 773-427-7000 Fax: 800-217-1260 www.escolighting.com
 Established 1975



HOW TO ORDER

Catalog Number	Mounting System	System Watts	Color Temp	CRI	Initial Lumens	
					@25°C	@85°C
WPL16310R	EZ5® Recessed power supply mounting system	37W	3500K	80	4730	4230
WPL16410R	EZ5® Recessed power supply mounting system	37W	4000K	70	5083	4545
WPL16510R	EZ5® Recessed power supply mounting system	37W	5000K	80	5435	4860
WPL16310S	EZ5® Surface power supply mounting system	37W	3500K	80	4730	4230
WPL16410S	EZ5® Surface power supply mounting system	37W	4000K	70	5083	4545
WPL16510S	EZ5® Surface power supply mounting system	37W	5000K	80	5435	4860
WPL26310R	EZ5® Recessed power supply mounting system	74W	3500K	80	9460	8460
WPL26410R	EZ5® Recessed power supply mounting system	74W	4000K	70	10166	9090
WPL26510R	EZ5® Recessed power supply mounting system	74W	5000K	80	10870	9720
WPL26310S	EZ5® Surface power supply mounting system	74W	3500K	80	9460	8460
WPL26410S	EZ5® Surface power supply mounting system	74W	4000K	70	10166	9720
WPL26510S	EZ5® Surface power supply mounting system	74W	5000K	80	10870	9720



Catalog Number	Mounting System	System Watts	Color Temp	CRI	Initial Lumens	
					@25°C	@85°C
WPDL16310R	EZ5® Recessed power supply mounting system	37W	3500K	80	4730	4230
WPDL16410R	EZ5® Recessed power supply mounting system	37W	4000K	70	5083	4545
WPDL16510R	EZ5® Recessed power supply mounting system	37W	5000K	80	5435	4860
WPDL16310S	EZ5® Surface power supply mounting system	37W	3500K	80	4730	4230
WPDL16410S	EZ5® Surface power supply mounting system	37W	4000K	70	5083	4545
WPDL16510S	EZ5® Surface power supply mounting system	37W	5000K	80	5435	4860
WPDL26310R	EZ5® Recessed power supply mounting system	74W	3500K	80	9460	8460
WPDL26410R	EZ5® Recessed power supply mounting system	74W	4000K	70	10166	9090
WPDL26510R	EZ5® Recessed power supply mounting system	74W	5000K	80	10870	9720
WPDL26310S	EZ5® Surface power supply mounting system	74W	3500K	80	9460	8460
WPDL26410S	EZ5® Surface power supply mounting system	74W	4000K	70	10166	9720
WPDL26510S	EZ5® Surface power supply mounting system	74W	5000K	80	10870	9720

ACCESSORIES AND OPTIONS



Photo Control* Suffix Catalog number with 120 Volt = **PC4**
208-277 Volt = **PC5**
Example: WPL265 becomes **WPL265PC4**



Occupancy Sensor* Suffix Catalog Number With 360° 48' coverage at 8' height = **OS2**
360° 40' coverage at 20' height = **OS3**
Example: WPL265 becomes **WPL265OS3**

Fuse and Fuse Holder* Suffix Catalog Number With **F**
Example: WPL265 becomes **WPL265F**

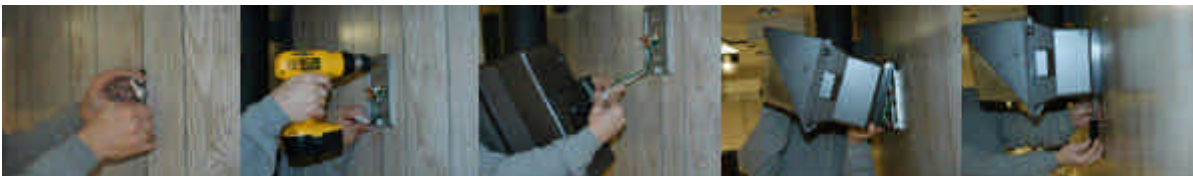
*120 or 277 volt must be specified when ordering a Photo Control or Fuse and Fuse Holder.

Voltage Suffix 120v = -1, 277v = -4

EXAMPLE ORDER: WPDL26310S = 74W, 3000K, with EZ5® surface power supply mounting system.

EZ5® INSTALLATION INSTRUCTIONS

Recessed Power Supply Installation



Step 1. Connect quick connector to power supply.

Step 2. Attach cast aluminum mounting plate on recessed j-box.

Step 3. Connect quick connector from power source to fixture.

Step 4. Hang wall pack on mounting plate.

Step 5. Secure wall pack to mounting plate with locking screw.

Surface Power Supply Installation



Step 1. Mark wall with supplied template.

Step 2. Start fasteners in wall.

Step 3. Hang wall pack using key slots.

Step 4. Secure to wall.

Step 5. Connect wall pack to external j-box.